

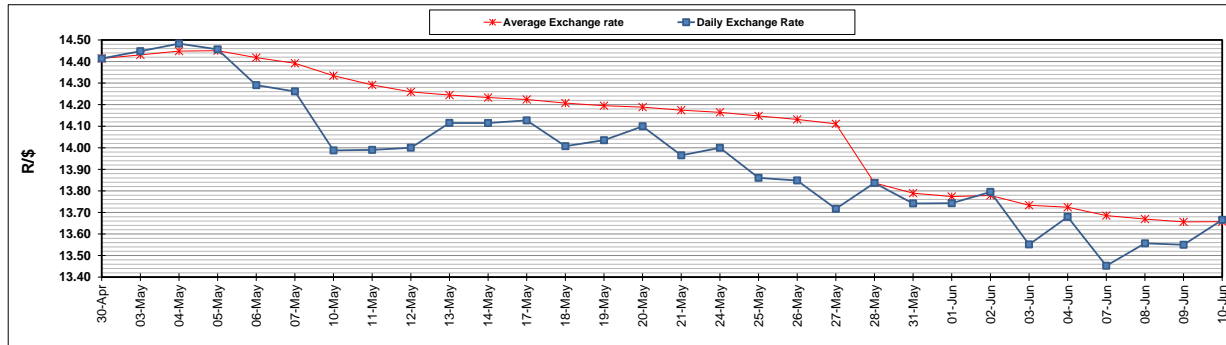
	PETROL 95 ULP	PETROL 93 ULP & LRP	DIESEL 0.05%	DIESEL 0.005%	ILL. PAR.
GAUTENG PUMP PRICE (SA c/l) AS FROM 02/06/2021	1,713.000	1,691.000	-	-	-
WHOLESALE PRICE (SA c/l) AS FROM 02/06/2021	-	-	1,466.620	1,471.020	877.488
SINGLE NATIONAL MAXIMUM RETAIL PRICE	-	-	-	-	1,102.000
BASIC FUEL PRICE - 10/06/2021 (SA c/l)	721.159	713.624	703.618	706.924	684.517
PRESS RELEASE CONTRIBUTION TO BFP 02/06/2021 - 10/06/2021 (SA c/l)	717.170	705.170	679.630	684.030	664.128
UNIT OVER/(UNDER) RECOVERY - 10/06/2021 (SA c/l)	(3.989)	(8.454)	(23.988)	(22.894)	(20.389)
AVERAGE BASIC FUEL PRICE 28/05/2021 - 10/06/2021	709.915	701.591	690.855	694.518	669.664
AVERAGE UNIT OVER/(UNDER) RECOVERY 28/05/2021 - 10/06/2021	10.255	6.579	(17.225)	(16.788)	(11.536)

ANALYSIS MOVEMENT OF AVERAGE OVER/(UNDER) RECOVERY

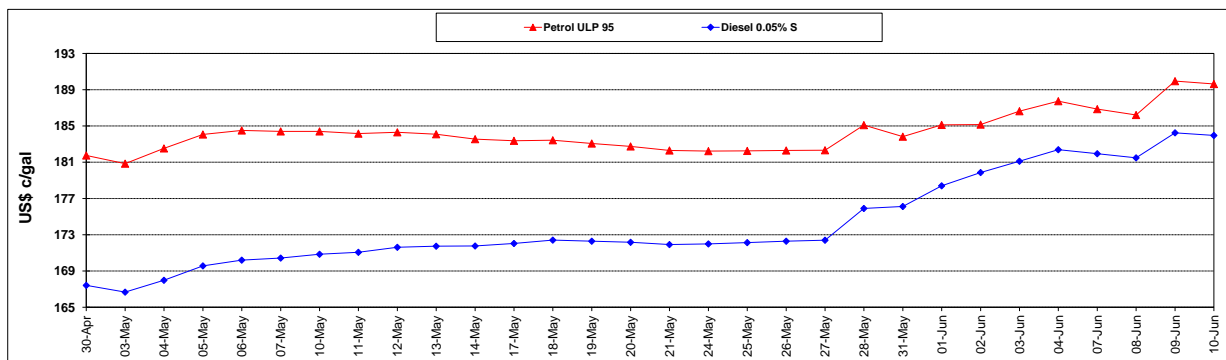
	PETROL 95	PETROL 93	DIESEL 0.05%	DIESEL 0.005%	ILL. PAR.
- MOVEMENT IN INTERNATIONAL PRODUCT PRICES	(13.339)	(16.739)	(40.186)	(39.871)	(33.793)
- MOVEMENT IN EXCHANGE RATE	23.594	23.318	22.961	23.083	22.257
AVERAGE UNIT OVER/(UNDER) RECOVERY 28/05/2021 - 10/06/2021	10.255	6.579	(17.225)	(16.788)	(11.536)

R/\$ EXCHANGE RATE - (R/\$13.6653- 10/06/2021)

EXCHANGE RATE USED IN BASIC FUEL PRICE



INTERNATIONAL PRODUCT PRICES OF BASKET USED IN BASIC FUEL PRICE



BASIC FUEL PRICE IN SA CENTS PER LITRE

